

Delphin  
ENERGY

# SOLAR STREET LIGHT



## VISION

"At Delphin Energy, our vision is to empower communities and industries worldwide with sustainable solar solutions that harness the power of the sun to create a brighter, cleaner, and more resilient future. As a global leader in solar energy, we are committed to driving innovation and excellence to address the world's energy challenges."

## Mission

"At Delphin Energy, our mission is to revolutionize the energy landscape through cutting-edge solar solutions:

**Advancing Agriculture:** Enhance productivity and ensure water security with efficient solar water pumps, providing sustainable farming solutions.

**Powering Progress:** Dedicated to clean energy adoption through high-performance solar panels, maximizing energy output, and reducing carbon footprints.

**Illuminating Communities:** Contribute to public safety and reduced energy costs with reliable solar street light systems, creating well-lit, secure, and environmentally conscious public spaces."

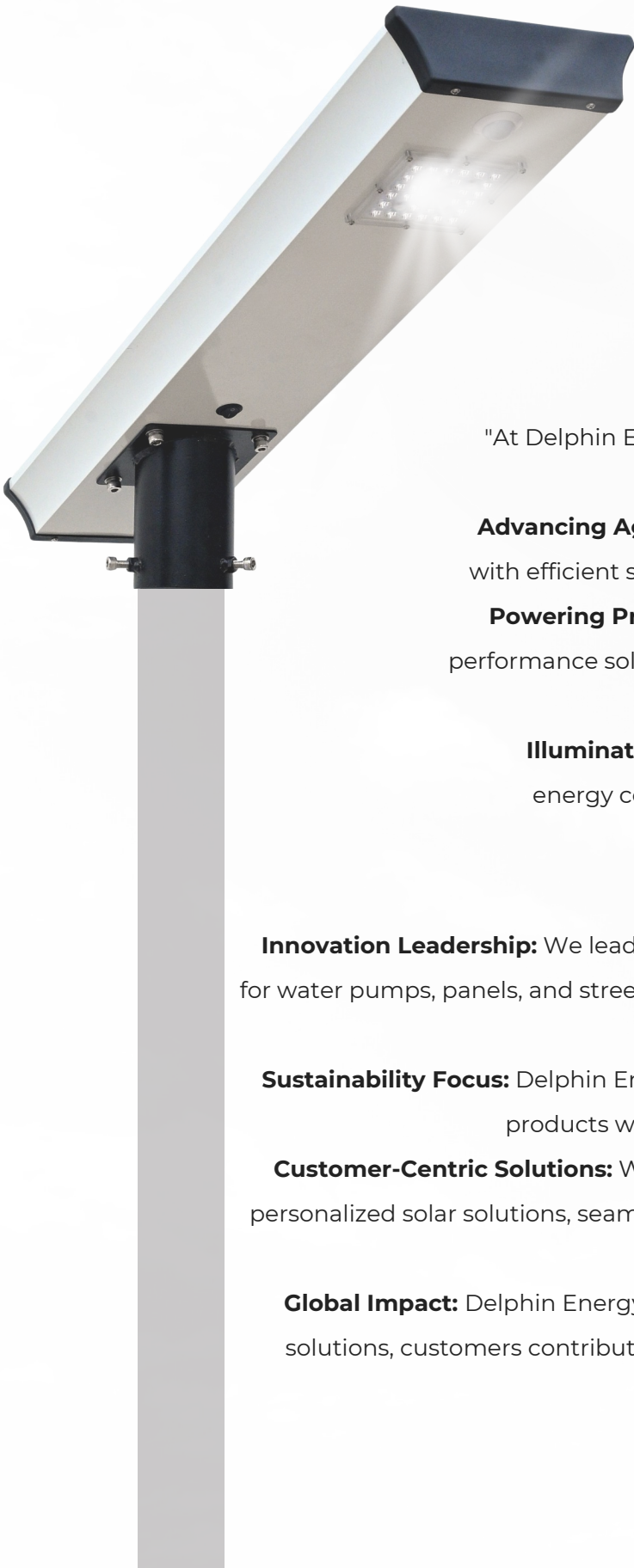
## Why Us?

**Innovation Leadership:** We lead in solar innovation, investing in cutting-edge technologies for water pumps, panels, and street lights, exceeding industry standards for performance and reliability.

**Sustainability Focus:** Delphin Energy is deeply committed to sustainability, designing solar products with a lifecycle approach to minimize environmental impact.

**Customer-Centric Solutions:** With a dedicated focus on customer satisfaction, we provide personalized solar solutions, seamlessly integrating water pumps, panels, and street lights to meet unique client requirements.

**Global Impact:** Delphin Energy is a global force for positive change. By choosing our solar solutions, customers contribute to carbon reduction, promote energy independence, and participate in building a more sustainable world.





## TYPES OF SOLAR STREET LIGHT



### SEMI-INTEGRATED SOLAR STREET LIGHT SYSTEM

**9 W - 60 W Range**

Inbuilt Battery  
High Number of Charge Cycles  
Less Manual Work

### ALL-IN-ONE SOLAR STREET LIGHT SYSTEM

**9 W - 60 W Range**

In-built Battery & Panel  
High Number of Charge Cycles  
Easy to Install



### NORMAL SOLAR STREET LIGHT SYSTEM

**9 W - 60 W Range**

Separate Battery & Panels  
Higher Backup Hours  
More Manual Work



# Semi-Integrated Solar Light

## 9 W - 60 W Range

- Inbuilt Battery
- High Number of Charge Cycles
- Less Manual Work

LED Watt	Battery Capacity 12.8 V LiFePO4	Recommended Solar Panel
9W	6 Ah	30W / 40W
12W	12 Ah	40W
15W	12 Ah	50W
20W	18 Ah	60W
24W	24 Ah	80W
30W	30 Ah	110W
40W	36 Ah	165W





## Product Information

LED Lumen Output	130 lm/W
Motion Sensor	Optional
Controller Rating	6A/10A
Dusk to Dawn	Yes
Dimming	Yes
LED Dispersion Angle	120°
LED Life (TA=25°C)	50000 Hrs.
Color Temperature	2700K - 6500K
CRI	70 - 82
LED Driver Efficiency	>95%
Operating Temp.	-40°C to 60°C
Light Backup Time	Full Night with Dimming



## All-In-One Street Light

### 9 W - 60 W Range

- Inbuilt Battery
- High Number of Charge Cycles
- Easy to install

LED Watt	Battery Capacity 12.8 V LiFePO4	Recommended Solar Panel
9W	6 Ah	30W
12W	12 Ah	40W
15W	12 Ah	40W
20W	18 Ah	40W
24W	24 Ah	60W
30W	30 Ah	60W
40W	36 Ah	75/80W
60W	36 Ah	75/80W





## Product Information

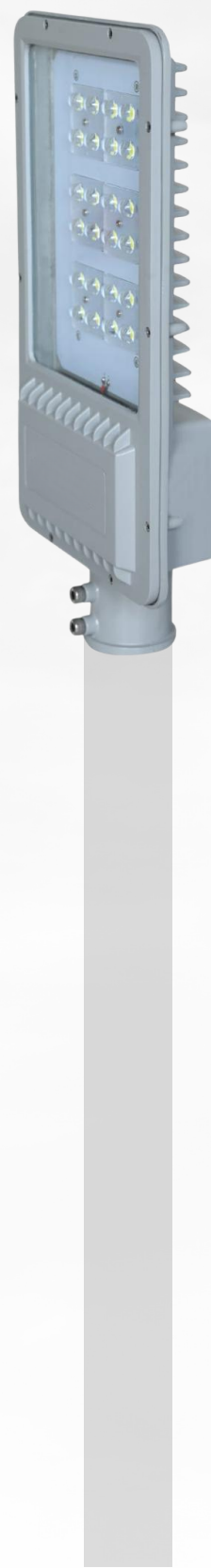
LED Lumen Output	130 lm/W
Solar Panel	Poly/Mono
Motion Sensor	PIR Motion Sensor (10m Range)
Controller Rating	10A
Dusk to Dawn	Yes
Dimming	Dimming to 1/3 intensity on detecting no movement for more than 30 seconds
LED Dispersion Angle	120°
LED Life (TA=25°C)	50000 Hrs.
Color Temperature	2700K - 6500K
CRI	70 - 82
LED Driver Efficiency	>95%
Operating Temp.	-40°C to 60°C
Light Backup Time	Full Night with Dimming

# Stand Alone Solar Street Light

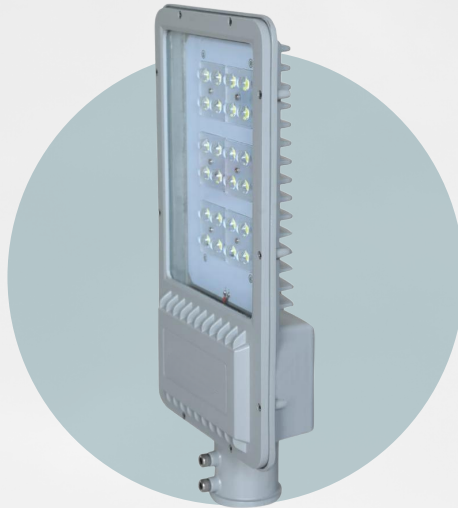
## 9 W - 60 W Range

- Inbuilt Battery
- High Number of Charge Cycles
- More Manual Work

LED Watt	Battery Capacity 12.8 V LiFePO4	Recommended Solar PanelFePO4
9W	26 Ah	30W / 40W
12W	26 Ah	50W
15W	26/42 Ah	50W
20W	42 Ah	75W
24W	42/65 Ah	75/100W
30W	65 Ah	100W
40W	75 Ah	150W



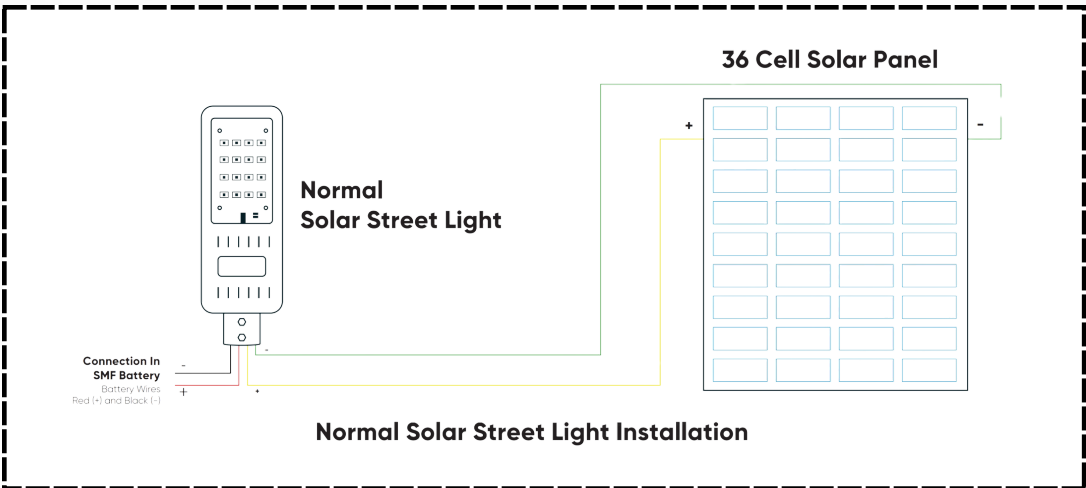
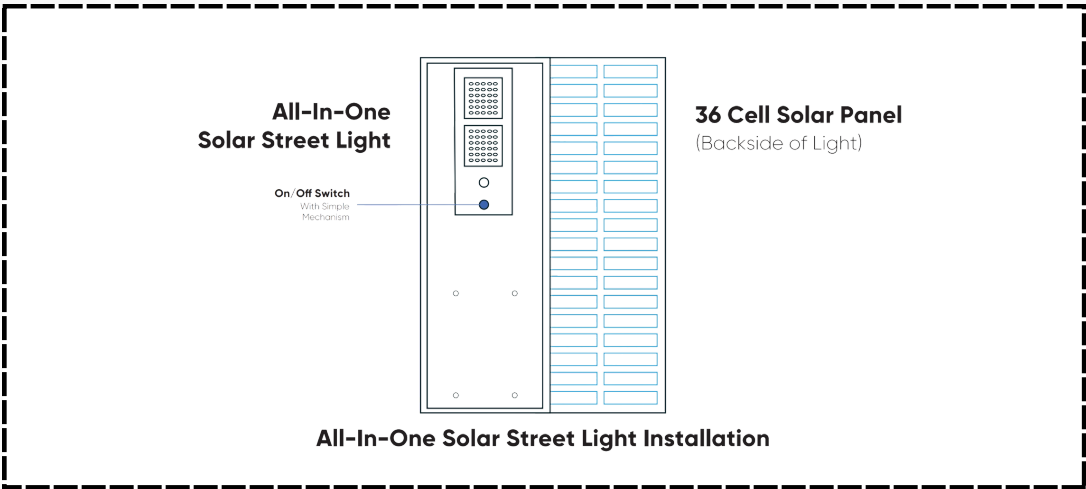
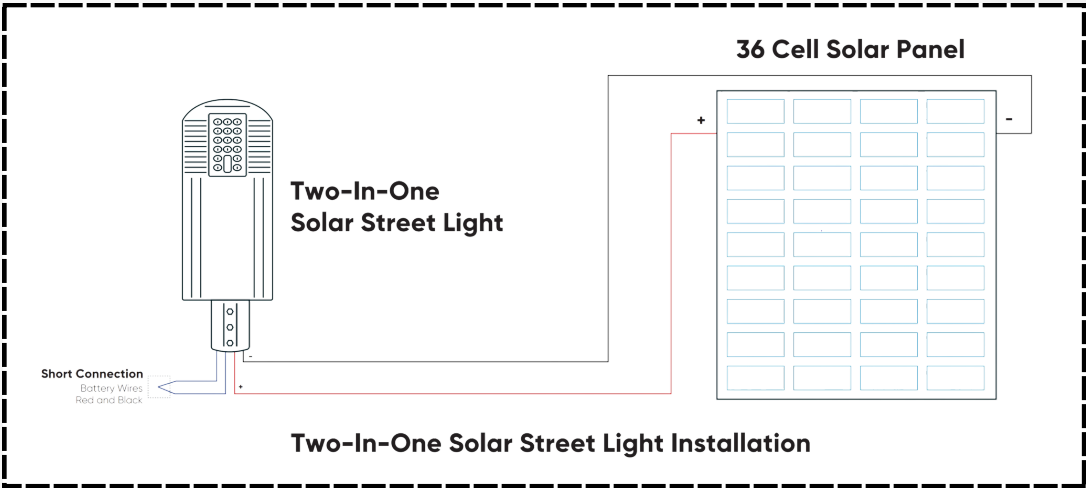




## Product Information

LED Lumen Output	130 lm/W
Optics	NA
Housing	Aluminum PDC
Frame Colour	Black and Gray
IP Rating	IP66
Operating Temp.	-40°C to 60°C
Input Voltage	12 - 24V
Life Span	50000 Hours
Power Factor	>0.95
CCT	2700K - 6500K
CRI	>70
THD	<10
LED Luminous Flow	190 lm/W
Impact Protection	IK08 (Nody & Frame Only)

# Installation Guide



## HIGH MAST and HYBRID LIGHT

**Customization for Every Need:** At Delphin Energy, we understand that every environment is unique, and so are its lighting needs. Our solar street lights offer a level of customization that ensures they seamlessly integrate into your specific surroundings. Whether it's a residential area, a commercial space, or an industrial zone, our lights can be tailored to meet your requirements.

**Hybrid Lights for Uninterrupted Illumination:** Introducing our innovative hybrid lights, a testament to our commitment to providing sustainable solutions. These lights combine the reliability of the grid with the independence of solar power, ensuring uninterrupted illumination even during power outages. With Delphin Energy's hybrid lights, you get the best of both worlds – a cost-effective solution with minimal environmental impact.

**High Mast Lights for Elevated Brilliance:** For areas that demand elevated illumination, our high mast lights are the perfect choice. Designed to be mounted on high poles, these lights offer a wide range of wattages, from 30W to 100W, catering to various lighting needs. Whether it's a large outdoor space, a parking lot, or an expansive street, Delphin Energy's high mast lights provide exceptional brightness, enhancing visibility and safety.

**Wide Wattage Range:** Choose from our high mast lights with wattages ranging from 30W to 100W, ensuring the perfect fit for any application.





## CONTACT US

**DELPHIN ENERGY PVT LTD**



 117, Mahvir ind estate, Santej GIDC, Ahmedabad, Gujarat 382721

 [info@delphinsolar.com](mailto:info@delphinsolar.com)  9081333481/82  [www.delphinsolar.com](http://www.delphinsolar.com)